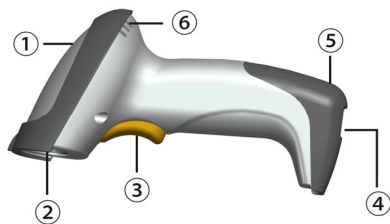


MD2 series barcode scanner quick guide

- ☞ A standard packing includes a scanner, a PS2 cable and a CD (or a user manual).
- ☞ Accessories include a stand, a RS232 cable, a 5V adaptor and a USB cable.
- ☞ Use a piece of dry and soft cloth when cleaning the scanner.

Parts of the scanner



- ① LED
- ② Exit window
- ③ Trigger
- ④ Cable interface port
- ⑤ Release-hole of the cable
- ⑥ Beeper

Installing the cable

1. Switch off the host;
2. Refer to the below pictures, connect the host with the scanner based on different cables;
3. Ensure that all connections are secure.
4. Switch on the host system. If installation is successful, the beeper will beep and LED will light.



PS2 cable

RS232 cable

USB cable

Removing the cable

1. Find the release-hole.
2. Insert a thin wire into the hole and pull out the cable gently.

Special setting

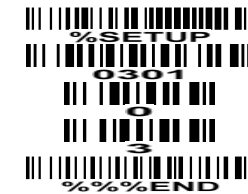
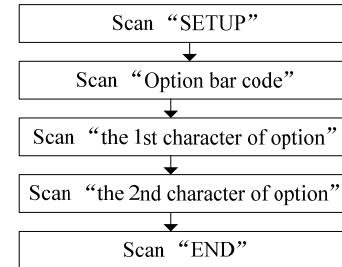


Default value initialization



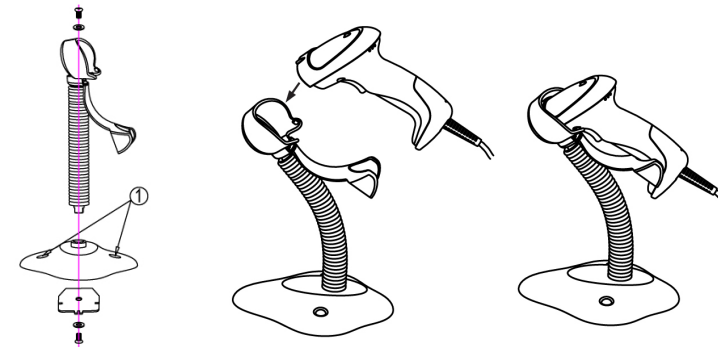
Firmware version list

Programming instruction and example



Example: to set Flow control to be XON/XOFF.

Assembling the stand (accessory)



1. See the figure above, tighten the screws.
2. Bend the neck to the desired position for scanning.
3. Screw mounting: Screw one #10 wood screw into each screw-mount-hole until the base of the stand is secured.
4. Tape mounting: ①Peel the paper liner off one side of each piece of tape and place the sticky surface over each of the three rectangular tape holders. ②Peel the paper liner off the exposed sides of each piece of tape and press the stand on a flat surface until it is secure.